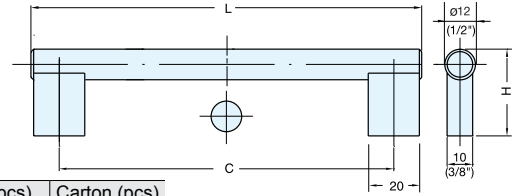


HANDLE (1/2" BAR PULL)



16 SERIES



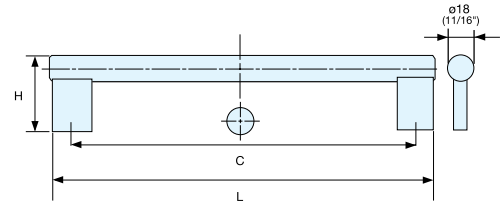
Item No.	L	C	H	Weight (g)	Box (pcs)	Carton (pcs)
1646	118	96 (3-25/32")	34 (1-11/32")	62	25	250
1647	150	128 (5-1/32")		70		
1648	182	160 (6-5/16")		85		
1650	214	192 (7-9/16")		94		
1651	314	292 (11-7/16")		121		
1652	342	320 (12-9/16")		128		
1653	364	342 (13-7/16")		134		
1654	414	392 (15-7/16")		148		
1655	514	492 (19-3/8")		175		
1656	614	592 (23-5/16")		202		

Material	Finish
304 Stainless Steel	Satin

HANDLE (11/16" BAR PULL)



27 SERIES



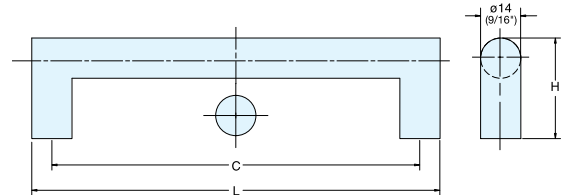
Item No.	L	C	H	Weight (g)	Box (pcs)	Carton (pcs)
27096	128	96 (3-25/32")	44 (1-47/64")	140	15	150
27128	160	128 (5-1/32")		152		
27160	192	160 (6-5/16")		170		
27192	224	192 (7-9/16")		183		
27292	324	292 (11-7/16")		225		
27320	352	320 (12-9/16")		237		
27342	374	342 (13-15/32")		245		
27392	424	392 (15-7/16")		267		
27492	524	492 (19-3/8")		309		
27592	624	592 (23-5/16")		351		

Material	Finish
304 Stainless Steel	Satin

HANDLE (MITERED CORNER)



DIH



Item No.	L	C	H	Weight (g)	Box (pcs)	Carton (pcs)
DIH-096	110	96 (3-25/32")	35 (1-3/8")	57	25	250
DIH-128	142	128 (5-1/32")		66		
DIH-192	206	192 (7-9/16")		83		
DIH-342	356	342 (13-15/32")		123		
DIH-492	506	492 (19-3/8")		163		
DIH-592	606	592 (23-5/16")		189		

Material	Finish
304 Stainless Steel	Satin