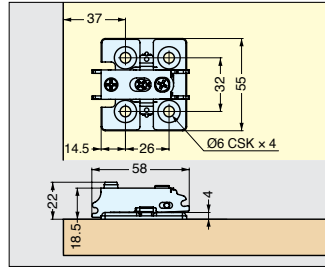
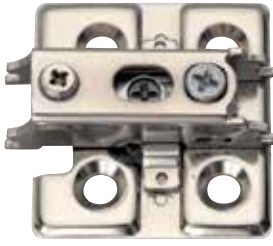


MOUNTING PLATE J95-P6T



J95-P6T



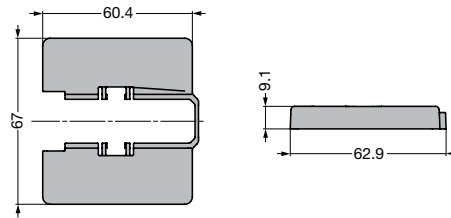
- Vertical adjustment: ± 3 mm ($\pm 1/8$ ")
- Overlay adjustment: $+0/-4$ mm ($\pm 5/32$ ")
- Depth adjustment: $+1.5/-2.5$ mm ($\pm 5/32$ ")

Item No.	Weight (g)	Box (pcs)	Carton (pcs)	Material	Finish
J95-P6T	94	10	100	Steel/Zinc Alloy	Nickel

MOUNTING PLATE COVER



J95ZC



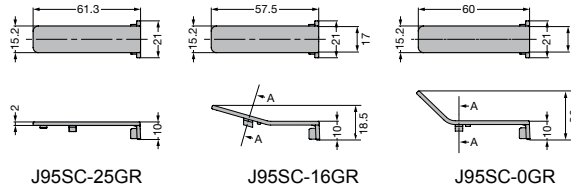
Nickel cover cap shown

Item No.	Weight (g)	Box (pcs)	Carton (pcs)	Material	Finish/Color
J95ZC-GR	9	100	1000	ABS	Gray/Nickel
J95ZC-NI					

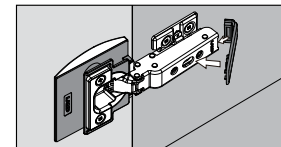
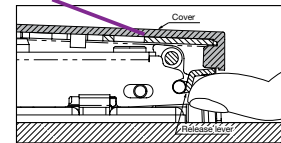
SAFETY COVER



J95SC



- The cover locks the release lever of J95 hinge for drop out prevention

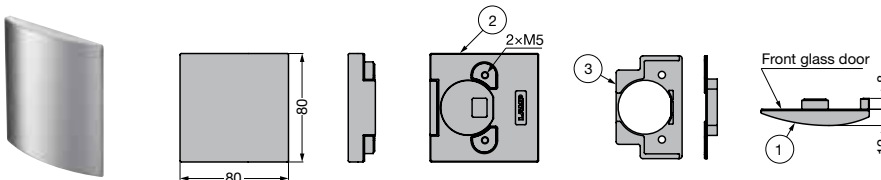


Item No.	Weight (g)	Box (pcs)	Carton (pcs)	Material	Finish/Color
J95SC-25GR J95SC-25NI	3	100	1000	ABS	Gray/Nickel
J95SC-16GR J95SC-16NI					
J95SC-0GR J95SC-0NI					

GLASS FACEPLATE FOR J95 SERIES



GH-J95FP



GH-J95FP-CR

Item No.	Weight (g)	Box (pcs)	Carton (pcs)	No.	Part Name	Material	Finish
GH-J95FP/CR	320	1	20	①	Face plate	ZDC	Chrome/Stain
GH-J95FP/SN				②	Face plate spacer	POM	Black
				③	Socket spacer		