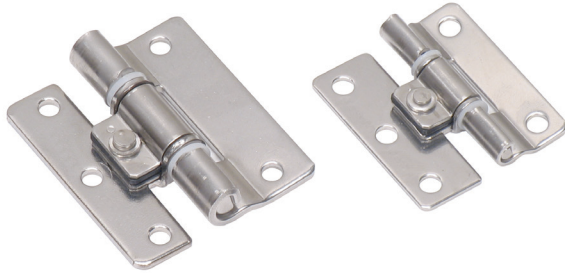


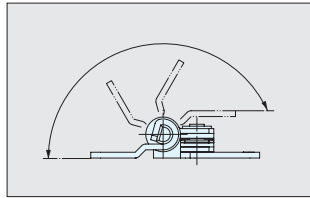
STAINLESS STEEL TORQUE HINGE



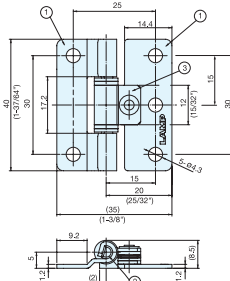
SFTH



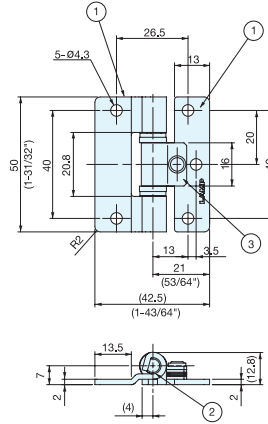
- Hinge with friction torque holds lid/door in desired position.
- Stainless steel construction for corrosive environments.
- Operating temperature: -20°C~60°C (-4°F~140°F)



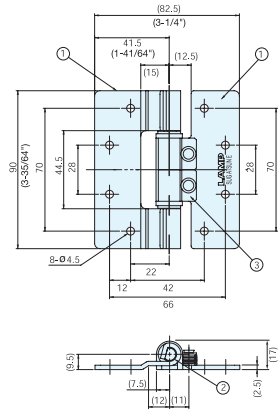
Applicable torque range



SFTH-02



SFTH-03



SFTH-05

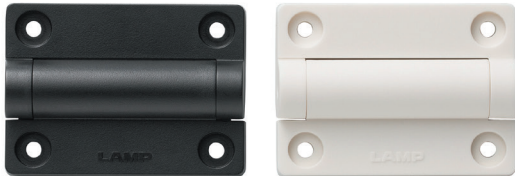
Item No.	Torque per piece (kgf·cm)	Weight (g)	Box (pcs)	Carton (pcs)
SFTH-02-5	5 (4.3 lbs·in) ±1 kgf·cm	21	50	500
SFTH-03-9	9 (7.8 lbs·in) ±2 kgf·cm	51	30	300
SFTH-03-19	19 (16.5 lbs·in) ±2 kgf·cm	195	10	100
SFTH-05-35	35 (30.4 lbs·in) ±5 kgf·cm			
SFTH-05-58	58 (50.3 lbs·in) ±5 kgf·cm			

No.	Part Name	Material	Finish
①	Body A	304 Stainless Steel	Polished
②	Shaft	303 Stainless Steel	
③	Body B	301 Stainless Steel	

COMBINATION HINGE



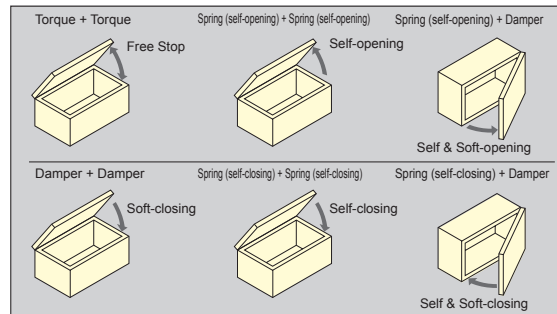
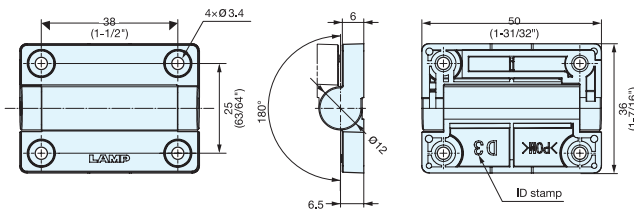
HG-VH8



Black

White

- Hinges for light weight lids & doors.
- Various motions in same hinge case.
- Flexible combination.



*Increase of 0.16 kgf·cm for every 30° of rotation. Maximum rotation of 120°

Item No.	ID Stamp	Feature	Torque per piece (kgf·cm)	Opening angle	Material
HG-VH8-N-BL	N	Standard Movement	-	270°	Polyacetal
HG-VH8-N-WT					
HG-VH8-D3-BL	D3	Soft-Closing Damper	0.22~0.39 (0.19~0.34 lbs·in)		
HG-VH8-D3-WT					
HG-VH8-OP-BL	OP	Self-Opening Spring	0.16 kgf·cm~0.64 kgf·cm* (0.14~0.56 lbs·in)		
HG-VH8-OP-WT					
HG-VH8-CL-BL	CL	Self-Closing Spring	1.53±0.51 (1.33±0.44 lbs·in)		
HG-VH8-CL-WT					
HG-VH8-T15-BL	T1	Free Stop	3.57±1.02 (3.10±0.89 lbs·in)		
HG-VH8-T15-WT					
HG-VH8-T35-BL	T3				
HG-VH8-T35-WT					