

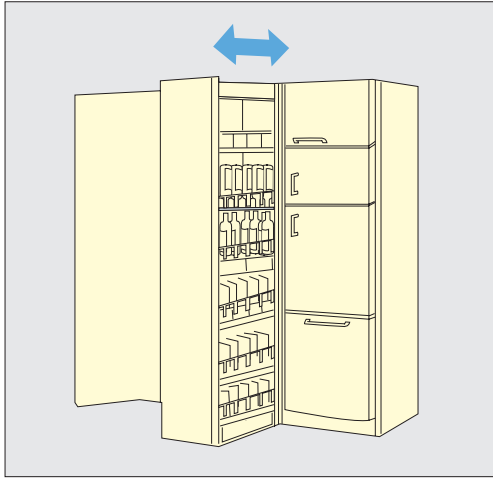
FULL EXTENSION SLIDE



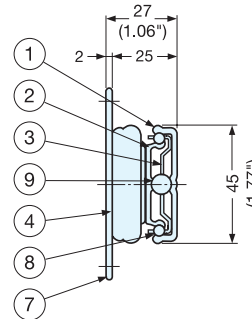
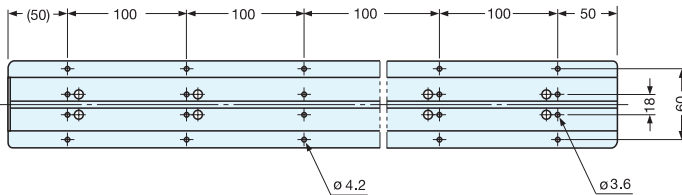
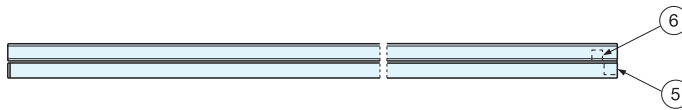
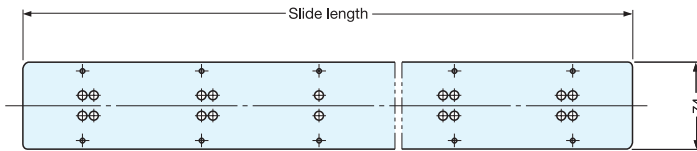
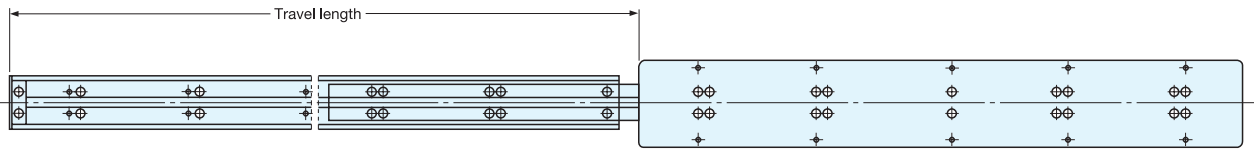
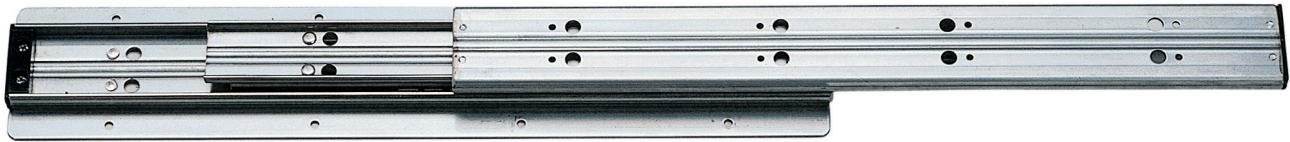
TSS-3

DRAWER SLIDES

FULL EXTENSION SLIDES



- Full extension.
- Positive stop.
- Non-handed.
- Heavy duty.
- Sold by each.



25.4 mm=1"

No.	Part	Material
①	Outer Rail	304 Stainless Steel
②	Inner Rail	
③	Retainer	Polyamide
④	End Stopper	
⑤	Outer Guide	Polyacetal
⑥	Inner Guide	
⑦	Plate	304 Stainless Steel
⑧	Large Balls	Steel
⑨	Small Balls	

Item No.	Slide Length	Travel Length	# of Holes	Load Rating (kg/pair)	Weight (g)	Box (pcs)
TSS-3-300	300 (11-13/16")	336 (13-7/32")	6	95 (209 lbs)	1380	4
TSS-3-400	400 (15-3/4")	436 (17-5/32")	8	90 (198 lbs)	1860	
TSS-3-500	500 (19-11/16")	536 (21-3/32")	10	85 (187 lbs)	2390	
TSS-3-600	600 (23-5/8")	636 (25-1/32")	12	80 (176 lbs)	2880	
TSS-3-800	800 (31-1/2")	836 (32-29/32")	16	65 (143 lbs)	3790	
TSS-3-1000	1000 (39-3/8")	1036 (40-25/32")	20	50 (110 lbs)	4710	