

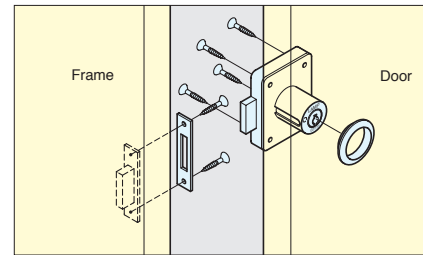
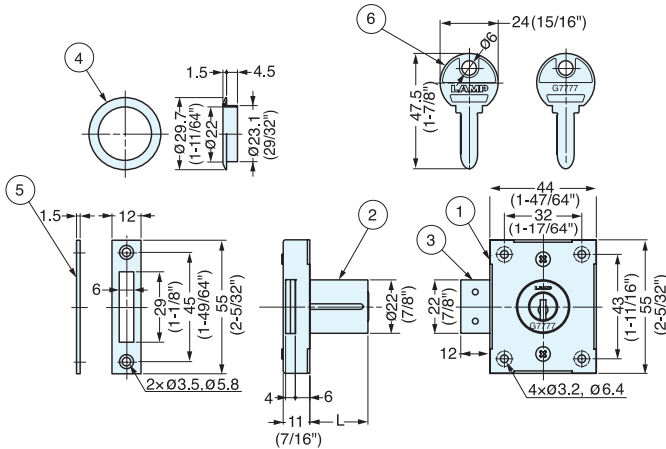
# CABINET LOCK



7810



- For use on right-handed doors (Lock for drawer application available by special order).
- High-security Million Lock dimple key; keys are reversible. Turn the key 360° to lock or unlock.
- Brass cylinder lock with stainless steel body.
- One million key changes available; Please specify keyed alike or differently when ordering.
- Includes screws.
- Available in Satin Nickel (NI), Chrome (CR) or Black (BL) finish.
- Can be used with spacer 6810-SP, sold separately. See below.
- Set includes 3 keys.
- Master key system available at a surcharge (Max. 2,520 key changes per master key.)

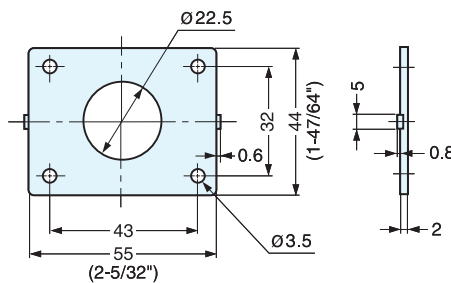


No.	Part Name	Material	Finish
①	Body	304 Stainless Steel	Satin
②	Cylinder Housing	Brass	Satin Nickel(NI) / Chrome(CR) / Black Chrome (BL)
③	Dead Bolt	304 Stainless Steel	Plain
④	Ring	Brass	Satin Nickel(NI) / Chrome(CR) / Black Chrome (BL)
⑤	Counterplate	304 Stainless Steel	Satin / Black Chrome (BL)
⑥	Key	Brass	Nickel

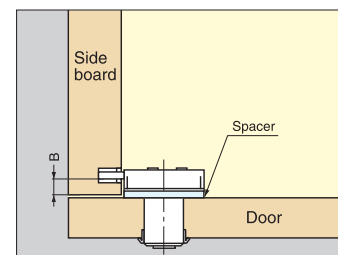
Item No.	L	Door Thickness (mm)	Weight (g)	Box (pcs)	Carton (pcs)
7810-24NI	24 ( 15/16" )	22~24 ( 7/8"~15/16" )	190	12	60
7810-24CR					
7810-24BL					
7810-30NI	30 ( 1-3/16" )	28~30 ( 1-3/32"~1-3/16" )	210		
7810-30CR					
7810-30BL					
7810-36NI	36 ( 1-7/16" )	34~36 ( 1-3/18"~1-7/16" )	225		
7810-36CR					
7810-36BL					

# SPACER

6810-SP



- Distance spacer for 3810S, 6830, 7810, and 8810-24 series locks.
- Use when additional distance on dimension B is required.
- Thickness: 2mm (5/64")
- Multiple spacers can be used if needed.



Item No.	Thickness	Weight (g)	Box (pcs)	Carton (pcs)
6810-SP	2	4.5	150	1500