

## DAMPER CATCH



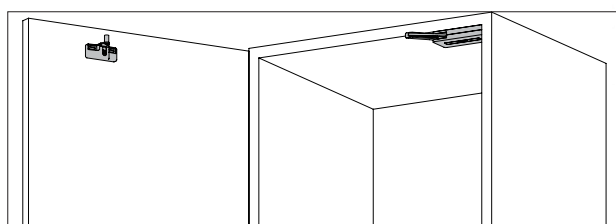
DC-200



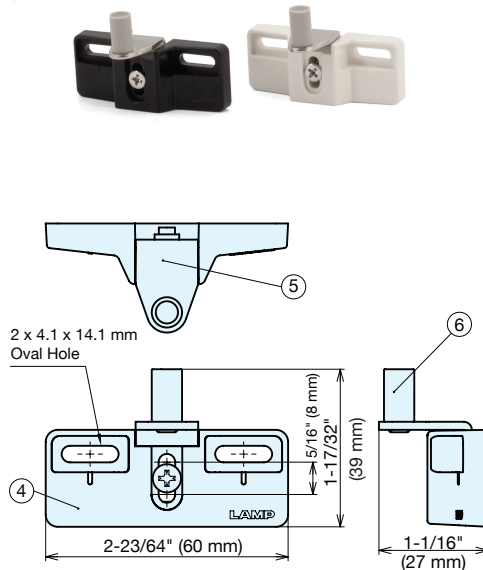
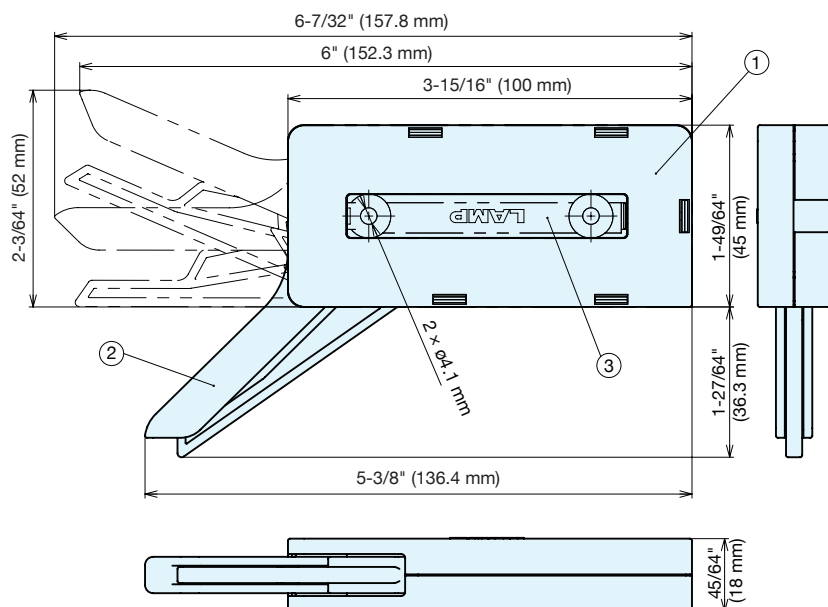
- Damper and catch combination for large cabinetry and closet doors.
- Allows door to soft close and prevent slamming.
- Holds doors in closed position.
- Easy to install by simply aligning body with the interior wall.
- Non-handed.
- Can handle doors up to 88 lbs (40 kg). (When using DC-200 - 40).
- Strike can be adjusted post-installation: horizontally  $\pm 5$  mm, vertically  $\pm 4$  mm.
- Passed 50,000 open/close cycles in a private test.

## RECOMMENDED HINGES

- Heavy Duty Concealed Hinge J95.
- 3way Adjustable Concealed Hinge HES3D-90
- Single axis furniture hinges.



Attach to the interior of the cabinet.



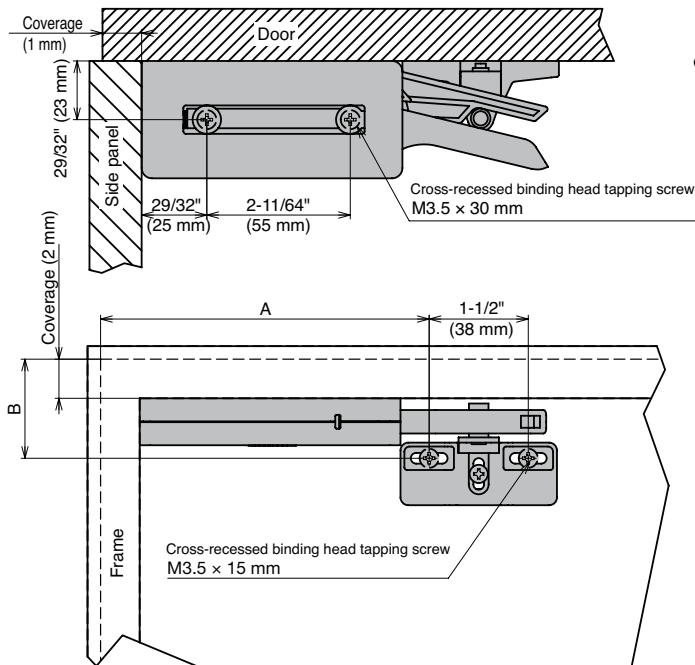
No.	Item Name	Materials	Finish/Color
①	Body	PC/ABS	White / Black
②	Arm	PA	White / Black
③	Body Cover	ABS	White / Black
④	Counter	PC/ABS	White / Black
⑤	Counter Plate	Steel (SPCC)	Nickel Plating
⑥	Bumper	Elastomer	Gray

Item Name	Color	Door Width	Door Height Max.	Load Capacity lbs	Weight (g)	Box (pcs)	Carton (pcs)
DC-200-25WT	White	17-23/32" ~ 35-7/16" (450 - 900 mm)	94-31/64" (2400 mm)	15 ~ 55 (7 ~ 25 kg)	105	10	100
DC-200-25BL	Black						
DC-200-40WT	White			55 ~ 88 (25 ~ 40 kg)			
DC-200-40BL	Black						

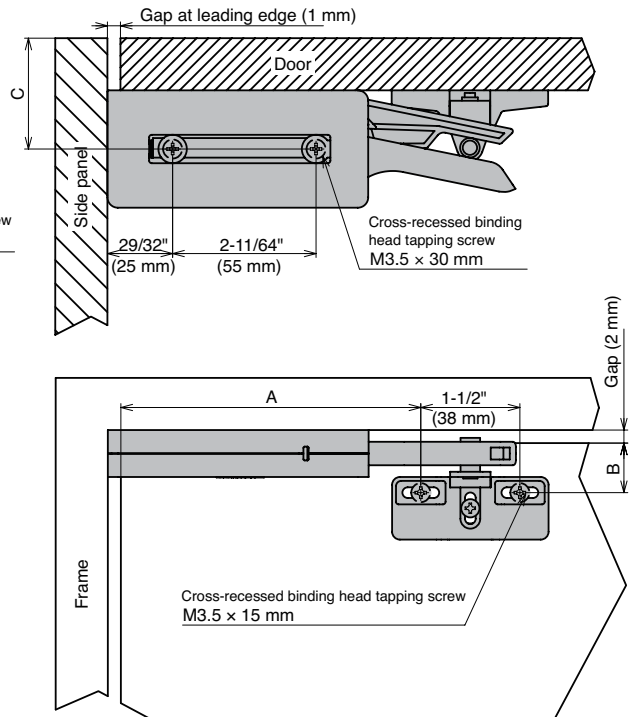
# DAMPER CATCH

DC-200

For overlay doors

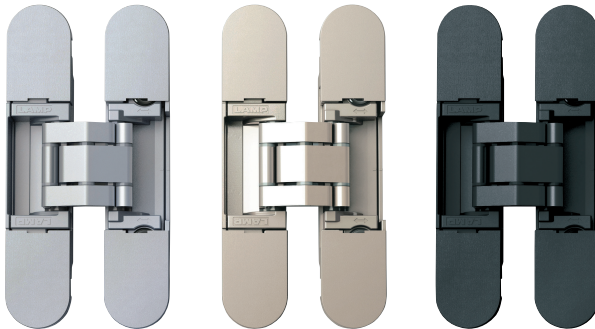


For inset doors Install a door stopper in addition to this product.



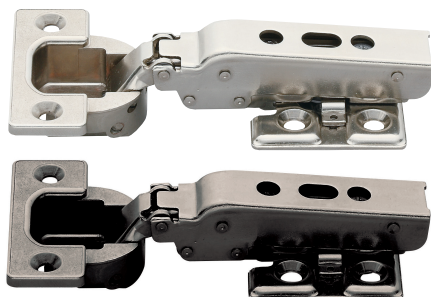
	A	B	C
Outset Doors	114 + Coverage (1)	24 + Coverage (2)	
Inset Doors	114 - gap at leading edge (1)	24 - gap (2)	23+Door Thickness

## RELATED PRODUCTS



### 3-WAY ADJUSTABLE CONCEALED HINGE HES3D-90

- 3-WAY adjustment function allows vertical, horizontal, and depth adjustment.
- Covers hide all screw heads for clean appearance.
- Hinge leaves separate for easy installation and adjustment.
- Door weight: Max. 26 lbs (12 kg)/2 pcs, 35 lbs (16 kg)/3 pcs
- Door thickness: Min. 23/32" (23 mm)
- Max door size: H 59-1/16" x W 23-5/8" (1500 mm x 600 mm)
- Includes steel countersunk wood screws.



### HEAVY DUTY CONCEALED HINGE J95

- Available in inset and overlay
- Load capacity: 55 lbs (25 kg)/2 pcs, 88 lbs (40 kg)/3 pcs.
- Maximum door width: 31-1/2" (800 mm)/2 pcs, 35-7/16" (900 mm)/3 pcs.
- Clip on type for easy installation.
- 3-way adjustment with door installed.
- Optional hinge cover (J95SC-25) and mounting plate cover (J95ZC) available (sold separately p.288).