

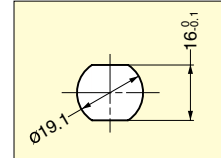
SHEET METAL CAM LOCK



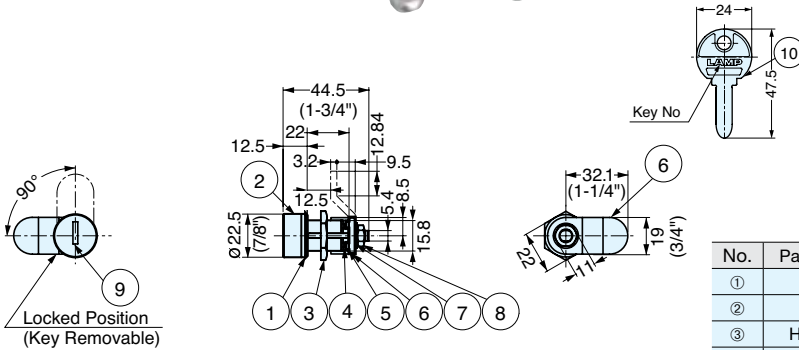
920BS



- Cylinder cam lock with water resistant cylinder door.
- Reversible key.
- 90 degree cam rotation.
- Key is removable in locked position only.
- Up to 2,000 key changes.
- Master key type available at surcharge. (Maximum 866 key changes per master key)



Cut Out Dimensions



No.	Part Name	Material	Finish
①	Body	Brass	Chrome
②	Cap		
③	Hex Nut	Steel	Yellow Zinc Chromate
④	Stop Washer	304 Stainless Steel	-
⑤	Plate	Steel	Yellow Zinc Chromate
⑥	Lock Plate		
⑦	Cam Plate		
⑧	Hex Nut		
⑨	Cylinder Door	304 Stainless Steel	-
⑩	Key	Brass	Nickel

Item No.	Metal Thickness (mm)	Keys Included	Weight (g)
920BS	0.8 ~ 12.0 (1/32"~1/2")	2	97

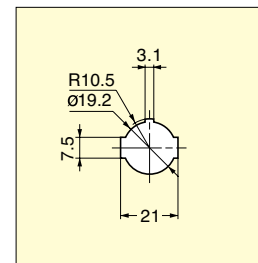
SHEET METAL CAM LOCK (SNAP-IN TYPE)



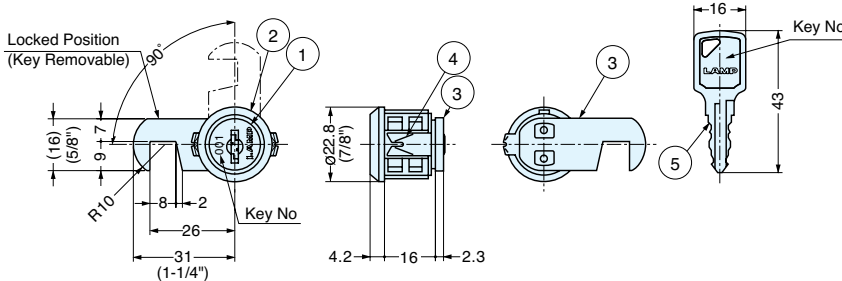
CLI-31



- Snap-in installation for sheet metal applications.
- 90 degree cam rotation.
- Key is removable in locked position only.
- Up to 108 key changes.



Cut Out Dimensions



No.	Part Name	Material	Finish
①	Cylinder (Inner)	Zinc Alloy	Dull Chrome
②	Cylinder (Outer)		
③	Cam	Steel	Yellow Zinc Chromate
④	Clip	304 Stainless Steel	-
⑤	Key	Brass	Nickel

Item No.	Metal Thickness (mm)	Keys Included	Weight (g)
CLI-31	0.8 (1/32")	2	58